

Omni-Directional Pig Signaller

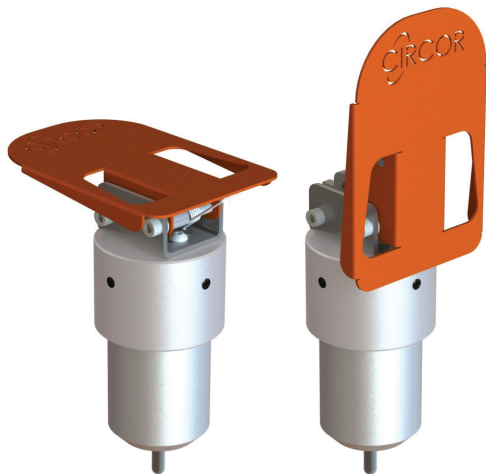
The Omni-directional pig signaller is a mechanical device that is fitted onto a pipeline via either a boss or flange connection that provides an Omni-directional intrusive protrusion (referred to as the trigger) through the pipeline wall and into the bore of the pipeline to detect the passage of a pigging tool via means of either a visual (referred to as the flag), electrical or dual visual/electrical signal.

Features of the Omni-Directional Pig Signaller:

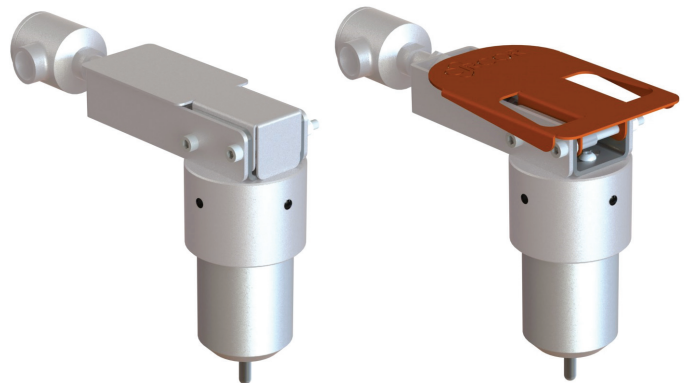
- > Compact design.
- > Can be fitted to pipeline nominal sizes from 2"ns and above.
- > No dynamic seals eliminating seal wear and potential leak paths.
- > Omni-directional trigger assembly allowing for the signaller to be mounted in a none predetermined orientation.
- > Trigger and flag assembly failsafe design not activated by internal or external forces such as pipeline vibration, high force winds, etc. therefore eliminating potential false signals.
- > Magnetic operation eliminates potentially problematic mechanical linkages.
- > Designed to be able to be removed under operational pressure using industry standard tooling.

Specialised Features:

- > Magnetically operated 316 stainless steel proximity switch c/w integrated junction box (Datasheet available upon request)
- > Switch rated to UL/CSA Class I Division 1 Groups A, B, C, D Class II Division 1 Groups E, F, G
- > 2"ns ASME B16.5 flange connections available in both RF and RTJ face types and Material grades. (Other flange types, nominal sizes and materials available upon request)



Boss mounted Visual Omni-directional signaller with the flag in both the Set (pre pig passage) and 'Tripped' (post pig passage) position



Electric
Omni-directional
signaller

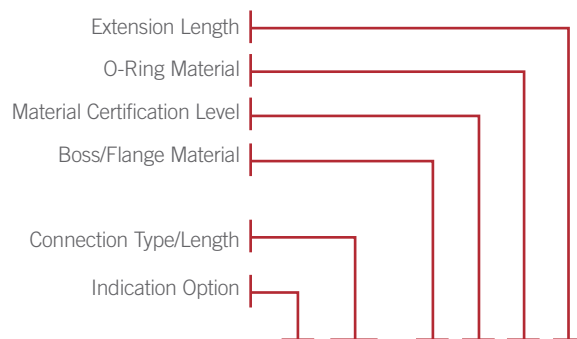
Dual signal
Omni-directional
signaller



Flange mounted Visual
Omni-directional signaller

Omni Signaller Product Codes

The nine digit product code (defined as a five digit prefix and a four digit suffix) allows for a multiple omni-signaller configurations to be easily defined covering a wide range of operational and service requirements.



Boss Mounted Omni-Signaller: 28 [X] [XX] – [X] [X] [X] [X]
 Flange Mounted Omni-Signaller: 29 [X] [XX] – [X] [X] [X] [X]

Prefix 5 Digit Code:

Mounting Type:

- 28 = Boss Mounted
- 29 = Flange Mounted

Indication Option:

- 1 = Visual Indication (V)
- 2 = Electrical Indication (E)
- 3 = Dual Indication Visual and Electrical (D)

Connection Type / Length:

- 00 = No boss or flange connection

Boss Mounted

- 01 = Boss to suit 2"ns 0.125" to 0.188" wall (4.25" long)
- 02 = Boss to suit 2"ns 0.189" to 0.375" wall (4.125" long)
- 03 = Boss to suit 2.5"ns 0.125" to 0.188" wall (4.25" long)
- 04 = Boss to suit 2.5"ns 0.189" to 0.375" wall (4.125" long)
- 05 = Boss to suit 3"ns 0.062" to 0.124" wall (4.375" long)
- 06 = Boss to suit 3"ns 0.125" to 0.188" wall (4.25" long)
- 07 = Boss to suit 3"ns 0.189" to 0.375" wall (4.125" long)
- 08 = Boss to suit 3"ns 0.376" to 0.562" wall (4" long)
- 09 = Boss to suit 3.5"ns 0.125" to 0.188" wall (4.25" long)
- 10 = Boss to suit 3.5"ns 0.189" to 0.375" wall (4.125" long)
- 11 = Boss to suit 3.5"ns 0.563" to 0.75" wall (3.75" long)
- 12 = Boss to suit 4"ns 0.125" to 0.188" wall (4.25" long)
- 13 = Boss to suit 4"ns 0.189" to 0.375" wall (4.125" long)
- 14 = Boss to suit 4"ns 0.376" to 0.562" wall (4" long)
- 15 = Boss to suit 4"ns 0.563" to 0.75" wall (3.75" long)
- 16 = Boss to suit 5"ns 0.125" to 0.188" wall (4.25" long)
- 17 = Boss to suit 5"ns 0.189" to 0.375" wall (4.125" long)
- 18 = Boss to suit 5"ns 0.563" to 0.75" wall (3.75" long)
- 19 = Boss to suit 6">"ns 0.125" to 0.249" wall (4.25" long)
- 20 = Boss to suit 6">"ns 0.25" to 0.5" wall (4" long)
- 21 = Boss to suit 6">"ns 0.501" to 0.75" wall (3.75" long)
- 22 = Boss to suit 6">"ns 0.751" to 1" wall (3.5" long)
- 23 = Boss to suit 6">"ns 1.001" to 1.25" wall (3.25" long)
- 24 = Boss to suit 6">"ns 1.251" to 1.5" wall (3" long)
- 25 = Boss to suit 6">"ns 1.501" to 1.75" wall (2.75" long)

Please note that all boss mounted Omni-signallers are rated to ASME class 1500 as standard.

Flange Mounted

- 50 = 2"ns ASME 150 RF Flange
- 51 = 2"ns ASME 300 RF Flange
- 52 = 2"ns ASME 600 RF Flange
- 53 = 2"ns ASME 900/1500 RF Flange
- 54 = 2"ns ASME 150 RTJ Flange
- 55 = 2"ns ASME 300 RTJ Flange
- 56 = 2"ns ASME 600 RTJ Flange
- 57 = 2"ns ASME 900/1500 RTJ Flange

Please note that all flange mounted Omni-signallers require the connection nozzle height confirming at time of order.

Suffix 4 Digit Code

Boss / Flange Material:

- 0 = No Boss Connection
- 1 = ASTM A333 Gr.6 / API 5L X52 (Dual Certified)
- 2 = ASTM A105 / ASTM A350 LF2 (Dual Certified)
- 3 = ASTM A694 F52
- 4 = ASTM A694 F60
- 5 = ASTM A694 F65
- 6 = ASTM A694 F70
- 7 = ASTM A694 F316

Please note that other materials are available upon request.

Material Certification Level:

- 1 = EN 10204 3.1
- 2 = EN 10204 3.2

O-Ring Material:

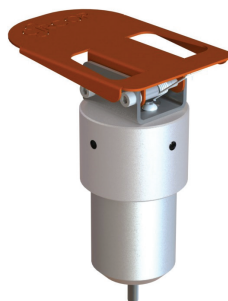
- 1 = FKM (-4°F / +392°F)
- 2 = FFKM (-59.8°F / +437°F)
- 3 = HNBR (-58°F / +320°F)
- 4 = NBR (-22°F / +248°F)

Please note that other materials are available upon request.

Extension Length:

- 0 = No extension
- 1 = 12" (304.8mm)
- 2 = 24" (609.6mm)
- 3 = 36" (914.4mm)
- 4 = 48" (1219.2mm)
- 5 = 60" (1524mm)
- 6 = 72" (1828.8mm)
- 7 = 84" (2133.6mm)
- 8 = 96" (2438.4mm)
- 9 = 108" (2743.2mm)
- C = Client Specific Length

Please note that all client specific lengths need confirming at time of order.



Example: 28120-1110 Omni-Signaller Definition:

- > Boss mounted
- > Visual Indication
- > To suit 6"ns and above pipeline with a wall thickness range of between 0.25" to 0.5"
- > ASTM A333 Gr.6 / API 5L X52 Boss material
- > EN 10204 3.1 material certification
- > FKM O-ring seal material
- > No extension